



TEDERIC TRX 500

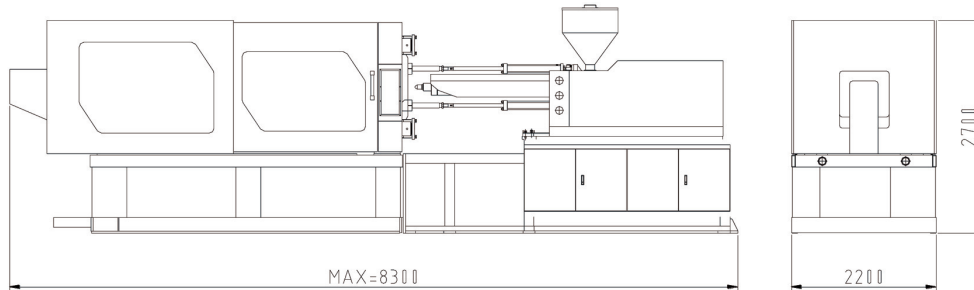
Plastic moulding machines



Technical data	ITEMS	UNIT	TRX 500		
			A	B	C
Injection unit	Screw diameter	mm	75	80	85
	Screw L/D ratio	L/D	23.5	22.0	20.7
	Shot size (theoretical)	cm ³	1767	2010	2269
	Injection weight	g	1608	1829	2065
	Injection rate	cm ³ /s	406	462	522
	Injection pressure	MPa	187	164	145
	Injection stroke	mm	400		
	Screw speed	rpm	0-156		
Clamping unit	Clamping force	KN	5000		
	Clamping stroke	mm	770		
	Space between tie bars	mm	800 x 800		
	Max Mold height	mm	800		
	Min Mold height	mm	250		
	Ejector stroke/force	mm/KN	231/152		
	No. of ejector pins	piece	13		
Others	Max pump pressure	Mpa	16		
	Pump Motor Power	KW	45.0		
	Heater power	KW	30		
	Hopper capacity	L	100		
	Oil tank capacity	L	900		
	Machine dimensions (LxWxH)	m	8.3 x 2.2 x 2.7		
	Machine weight	T	20.0		



Machinery dimensions



MACHINERY DIMENSIONS

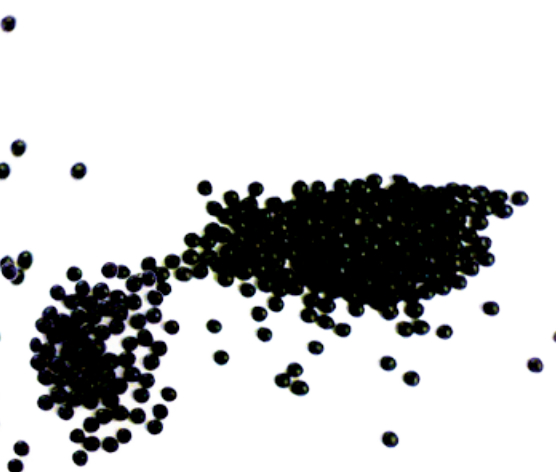




Plate mould dimensions

