



TEDERIC TRX 3800

Plastic moulding machines



Technical data	ITEMS	UNIT	TRX 3800		
			A	B	C
Injection unit	Screw diameter	mm	230	240	250
	Screw L/D ratio	L/D	23.0	22.0	21.1
	Shot size (theoretical)	cm ³	52350	57001	61850
	Injection weight	g	47638	51871	56284
	Injection rate	cm ³ /s	2526	2750	2984
	Injection pressure	MPa	174	160	147
	Injection stroke	mm	1260		
	Screw speed	rpm	0-50		
Clamping unit	Clamping force	KN	38000		
	Clamping stroke	mm	2550		
	Space between tie bars	mm	2330 x 2200		
	Max Mold height	mm	2250		
	Min Mold height	mm	1000		
	Ejector stroke/force	mm/KN	600/700		
	No. of ejector pins	piece	45		
Others	Max pump pressure	Mpa	16		
	Pump Motor Power	KW	55+55+55+55+30		
	Heater power	KW	200		
	Hopper capacity	L	200		
	Oil tank capacity	L	7000		
	Machine dimensions (LxWxH)	m	24 x 4.5 x 5.6		
	Machine weight	T	300.0		



Machinery dimensions

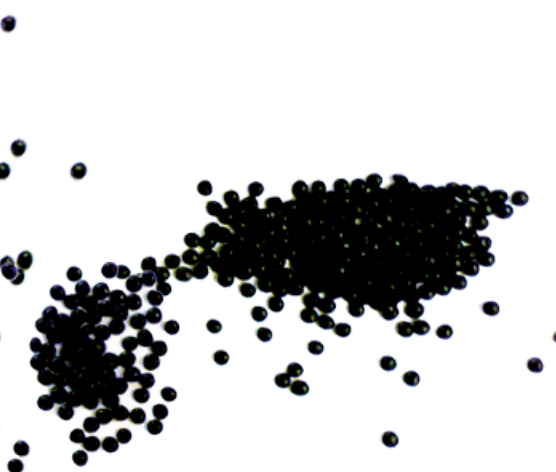




Plate mould dimensions

